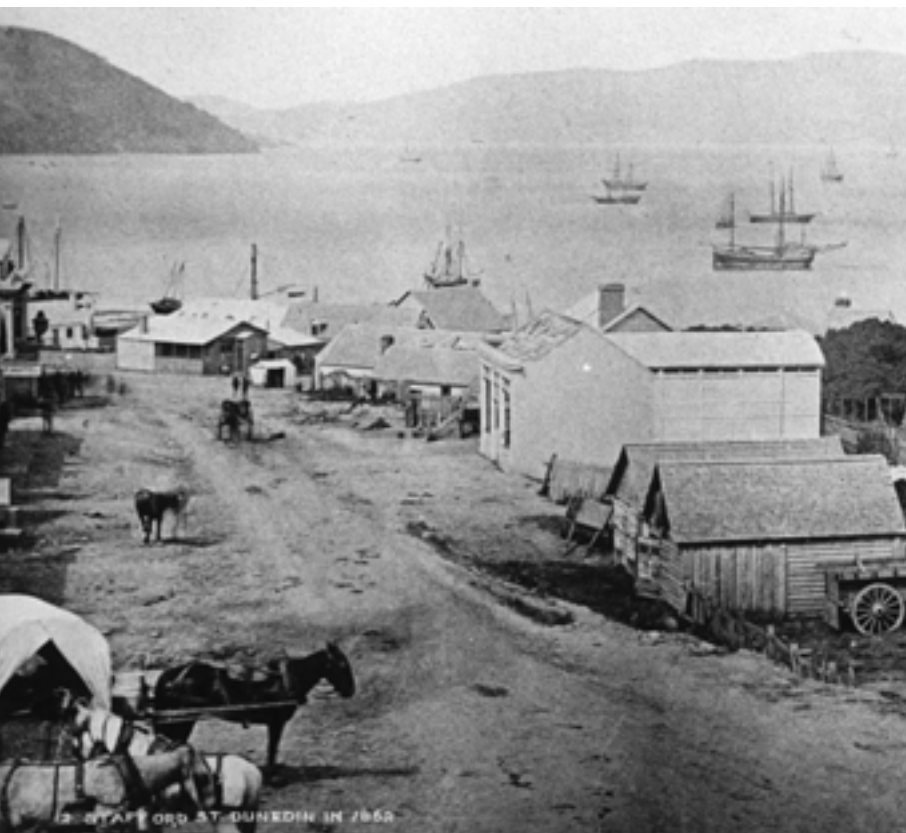




Genealogical Sources : Residences :



Stafford St, DUNEDIN. 1862. C/N E3147/64; S06-443c.



Prospector's Hut, Terrytown near Beaumont ca 1890. S06-443a

Nau Mai Haere Mai ki Te Uare Taoka o Hākena : : Welcome to the Hocken Collections

He mihi nui tēnei ki a koutou
kā uri o kā hau e whā arā,
kā mātāwaka o te motu,
o te ao whānui hoki.
Nau mai, haere mai ki te taumata.

As you Arrive

As you begin your research at the Hocken, please be aware that we seek to preserve all the taoka we hold for future generations. To help ensure that all taoka are properly protected, we ask that you :

- place your bags in the lockers provided
- leave all food and drink including water bottles in the lockers. We have a lunchroom off the foyer which everyone is welcome to use
- switch your cellphone to silent or turn it off

You are welcome to bring any materials you need for research and some ID in with you. As you arrive in the Reference or Pictorial Collections areas, please sign the Readers Register each day.

Access to the Collections

Most of the commonly-used genealogical sources available at the Hocken Collections can be found on microfiche or in the ready reference section of the main reference area on the ground floor. Please ask staff if you need help locating any of these sources.

We hold numerous other sources—both published and unpublished—in our closed stacks, and these can be searched and requested through the Hocken's Online Public Access Catalogues (OPACs). There are two different OPACs:

- for books, theses, journals, magazines, maps, and audiovisual material, use <http://otago.lconz.ac.nz> - the University of Otago Library catalogue;
- for archives & manuscripts, you will need to consult Hākena - <http://hakena.otago.ac.nz/nreq/Welcome.html>.

Upstairs on the first floor in Pictorial Collections, some photographs are available for viewing in the Reader Access file, but you will need to ask staff to help you locate further photographs, as well as all pictures, paintings and posters.

What do you know already?

Look for clues from the information that you already have about an individual, such as:

- marriage records
- death records
- birth records of children

You can then search the relevant sources listed below to find out where your ancestor lived.

Otago Nominal Index (ONI)

This database, available at <http://marvin.otago.ac.nz/oni/>, includes records from Otago and Southland electoral and jurors' rolls, early directories and the *Otago Police Gazette* to 1876. Further electoral roll entries for 1877/78 and 1893 have also been added. ONI allows you to look for entries for particular individuals and is helpful if you don't know exactly where they were residing in the Otago/Southland region.

Directories

The Hocken Collections hold a range of New Zealand directories. Some of these are located in the ready reference area, or are on microfiche or CD-Rom. Others must be retrieved for you - check holdings in the publications catalogue, LCoNZ, at <http://otago.lconz.ac.nz/>. Directories are usually arranged in three sections, alphabetically - under name of the town or city, under personal name (usually only male heads of the household are listed, except for widows, boarding house keepers, etc), and under name of trade or profession.

Holdings include -

Wise's New Zealand Directory

These cover the whole country for the period the period 1872-73 until 1955. After 1955 they were published as four regional volumes - Auckland City and Province; Wellington, Hawke's Bay and Taranaki; Canterbury, Nelson, Marlborough and Westland; Otago and Southland. In 1981 the alphabetical section only lists business firms. Holdings continue until the mid-1990's.

Stone's Directories.

Regional coverage for Otago and Southland 1884-1954; Canterbury, Nelson, Marlborough and Westland 1899-1955; and Wellington, Hawke's Bay and Taranaki 1891/1892-

1945.

Cleave's Auckland Directory

1894 and 1895 only.

Leightons Auckland Directory

1934 to 1939-40 only.

Wise's Auckland Provincial Directory

1944, 1946 and 1947 only.

Harnett's Dunedin Directory

1863 to 1867 only.

Wise's Dunedin Directory

1865 to 1871-2 only.

Australian Directories

Check microfiche collection and publications catalogue for holdings.

Almanacs

Almanacs are another useful source for locating information about businesses and government office bearers. They do not contain details about private residences. Details of holdings can be found in the publications catalogue.

Mackay's Otago, Southland, and Gold Fields' Almanac

This was published from 1864 and from 1871 it was known as *Mackay's Otago Almanac*. Holdings go up to 1880 but no issues are held for the years 1874, 1876 or 1878. A number of trades and professions are listed for each township and there is also an official directory. Office bearers of societies, associations and companies are listed in separate sections, as well as runholders and sheep returns. Advertisements for various businesses are published at the back of each volume.

Mills, Dick & Co.'s Otago Provincial Almanac & Directory

This is held for the years 1875 to 1909, although some issues are lacking. All issues incorporate the *Rose's Southland Almanac*. From 1881 they also incorporate *Wise's Almanac* and from 1885 they further incorporate *Mackay's Otago Almanac*. The issues from 1905 are titled *Mills, Dick & Co's Otago, Southland and South Canterbury Almanac and Directory*.

Electoral Rolls

Electoral rolls for New Zealand are held from 1865 onwards. The electoral rolls from 1865 to 1963 are held on microfiche. It is helpful to know which district the individuals you are looking for resided in before searching the electoral rolls. Use clues from directories and other sources to find their place of residence. If you are not sure which electoral district includes their place of residence for a particular period, use the *New Zealand Electoral Atlas* (1989) by Alan McRobie (located beside the electoral rolls on microfiche). Remember that women are not included on the electoral rolls until 1893.

Telephone Books

Telephone books for the various districts of New Zealand north of Otago are held from ca.1965 onwards. Invercargill telephone books are held from 1955 and Dunedin telephone books are held from 1913. Private Box directories for New Zealand are held from 1957 on. The most current telephone directories are located in the ready reference area, and online versions can be found at www.whitepages.co.nz or www.yellowpages.co.nz.

Return of Freeholders of New Zealand 1882

A three-volume publication located in the ready reference area and on microfiche. It comprises a list of individuals, (including deceased estates) in alphabetical order, who owned property in New Zealand in 1882. Records were compiled from property tax records but unfortunately they were not compiled for any other year. The ownership of land by Maori has not been included. The addresses and occupations of owners are supplied. This publication can be useful as a starting point if you are not sure where in New Zealand someone may have been residing in 1882. It is also useful because it includes women, as property owners, who were not included in the electoral rolls at that time.

Sources about particular houses or buildings

How old is our house? by George Griffiths

Buildings of Dunedin by Niel Wales and Hardwicke Knight

Bricks and Mortar; Houses and Homes; More Houses and Homes; Further Houses and Homes; Houses of Dunedin by Lois Galer

Newspapers

Look for clues such as dates of opening, names of architects, etc., to search for further references in newspapers. Search the Dunedin City Libraries' *Southern Regional News Index* <http://www.cityofdunedin.com/ipac20/ipac.jsp?profile=remote>. Ask staff to check the Hocken Collections Reference database for you.

Index New Zealand [database]

Use this database to locate articles in New Zealand journals and newspapers from 1987 onwards.

Other publications

Check the publications catalogues for books about significant buildings or architects, local histories, and publications about various Dunedin suburbs.

Archives and Manuscripts

Search Hakena, the archives catalogue, <http://hakena.otago.ac.nz/nreq/Welcome.html> for plans and records of architects.

Government Records

Try the relevant departmental reports in the *Appendices to the Journals of the House of Representatives* or the appropriate Archives New Zealand office.

Photographs

Look for photographs of the building, street, or area upstairs in the pictorial collections.

Maps

If the legal description of the area is known (ie., block and section numbers), then you may be able to locate a cadastral map of the area in the maps collection. The collection also includes maps of various Dunedin sub-divisions. Use the publications catalogue to locate this material.

The collection includes aerial photographs of Dunedin streets from ca.1949 – ask staff for these. Aerial photographs for other years are held at the Dunedin City Council archives. Current aerial photographs of properties are available on the Dunedin City Council webpage http://www.cityofdunedin.com/city/?page=searchtools_gis.

Other useful publications

Church building in Otago by Hardwicke Knight

Dunedin churches: past and present by Charles Croot

Pubs galore: history of Dunedin hotels 1848-1984 by Frank Tod

Barmaids, billiards, nobblers & rat-pits: pub life in goldrush Dunedin, 1861-65 by R.P. Hargreaves

The Cyclopaedia of New Zealand (several volumes covering the districts of New Zealand)

Progress: with which is incorporated the Scientific New Zealander- a journal published in Wellington that contains information about architects and houses. Issues from 1907 to

1913 held (with gaps).

Home and building (later titled *New Zealand home and building*) – a journal held from 1936 that contains information about architects and houses.

The New Zealand villa: past and present by Di Stewart.. Look in the publications catalogue for books on other architectural styles eg., Art Deco.

Down Every Street and Byway: Finding Your Family with Stone's New Zealand Directories by Mike Hamblyn.

[Early New Zealand directories: a brief guide](#) Friends of the Hocken Collections Bulletin Number 7 by Keith Maslen.

[A library-bus tour of the suburbs](#) Friends of the Hocken Collections Bulletin Number 42 by George Griffiths.

More FoHC Bulletins can be found at <http://www.library.otago.ac.nz/hocken/guides.html#bulletins>

Other contacts

Land Information New Zealand

John Wickliffe House, 265 Princes Street, Dunedin - www.linz.govt.nz

Archives New Zealand Dunedin Regional Office.

556 George Street, Dunedin - www.archives.govt.nz

Dunedin City Council Archives

Civic Centre, 50 The Octagon, Dunedin—

www.cityofdunedin.com/city/?page=archives_about

New Zealand Historic Places Trust Regional Office

Queens Building, 109 Princes Street, Dunedin - www.historic.org.nz

Other Guides in this series include:

A General Guide

Shipping

Births, Deaths & Marriages

Occupations

Education

Internet Sources



Grand Hotel, DUNEDIN ca1880. C/N E1988/39.

Cnr Anzac Ave & Parry Street, PO Box 56, DUNEDIN / ŌTEPOTI
03 479 8868 ph :: 03 479 5078 fax
reference.hocken@library.otago.ac.nz
<http://www.library.otago.ac.nz/hocken/index.html>

Monday - Friday 9:30am - 5pm
Tuesday 6pm - 9pm
(publications & pre-requested archives)
Saturday 9am - 12noon
(publications, pictorial collections & pre-requested archives)